

Research In Motion

How to set up Eclipse for Mobile Development

For BlackBerry SmartPhones

Prosanta Bhattacharjee



09

Contents

Setting up the Necessary Tools.....	3
Introduction	4
Installation	5
Links	8

Setting up the Necessary Tools

This tutorial will show you how to install the necessary plug-ins for Eclipse and set up your environment to debug your JavaScript code using the Eclipse IDE.

This series of tutorials will focus on the BlackBerry Web Development Plug-in for Eclipse, as Eclipse is widely used as a tool for Java development, and has been a key to BlackBerry application development. There are two different installs for Eclipse, one contains only the plug in and requires you to install the plug in on your development environment; the other contains both the plug in and the Eclipse IDE. If you download the latter (plug-in and Eclipse IDE) you can skip the install steps, as everything will be configured for you.

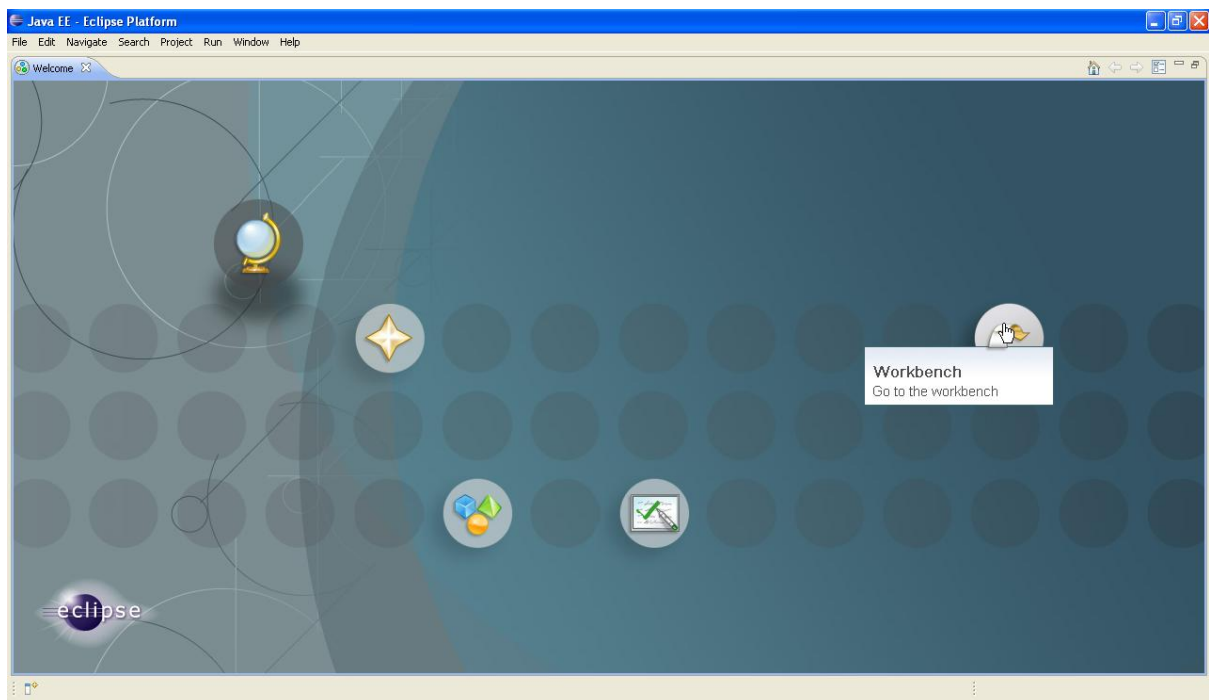


Figure 1

Introduction

System Requirements:

- Windows® XP or Windows Vista™ (32-bit)
- Eclipse: Eclipse 3.4.1, EMF 2.4.1, WTP 3.0.3
- Java®: Java 1.6

You will also need to download the BlackBerry Web Development Plug-in for Eclipse. The Plug-in can be found on the [BlackBerry Developer website](#) .

Installation

- 1) In Eclipse select Help -> Software Updates

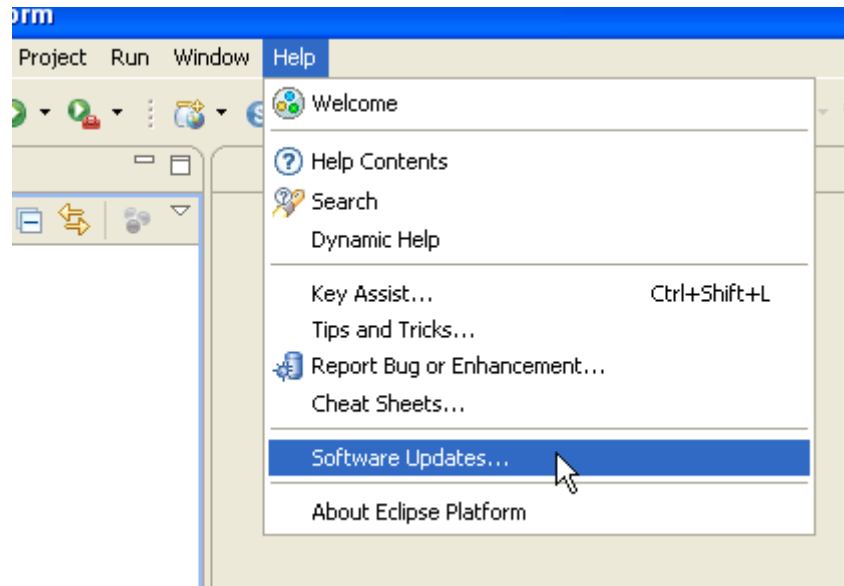


Figure 2

- 2) Select the "Available Software" tab

3) Click Add Site...

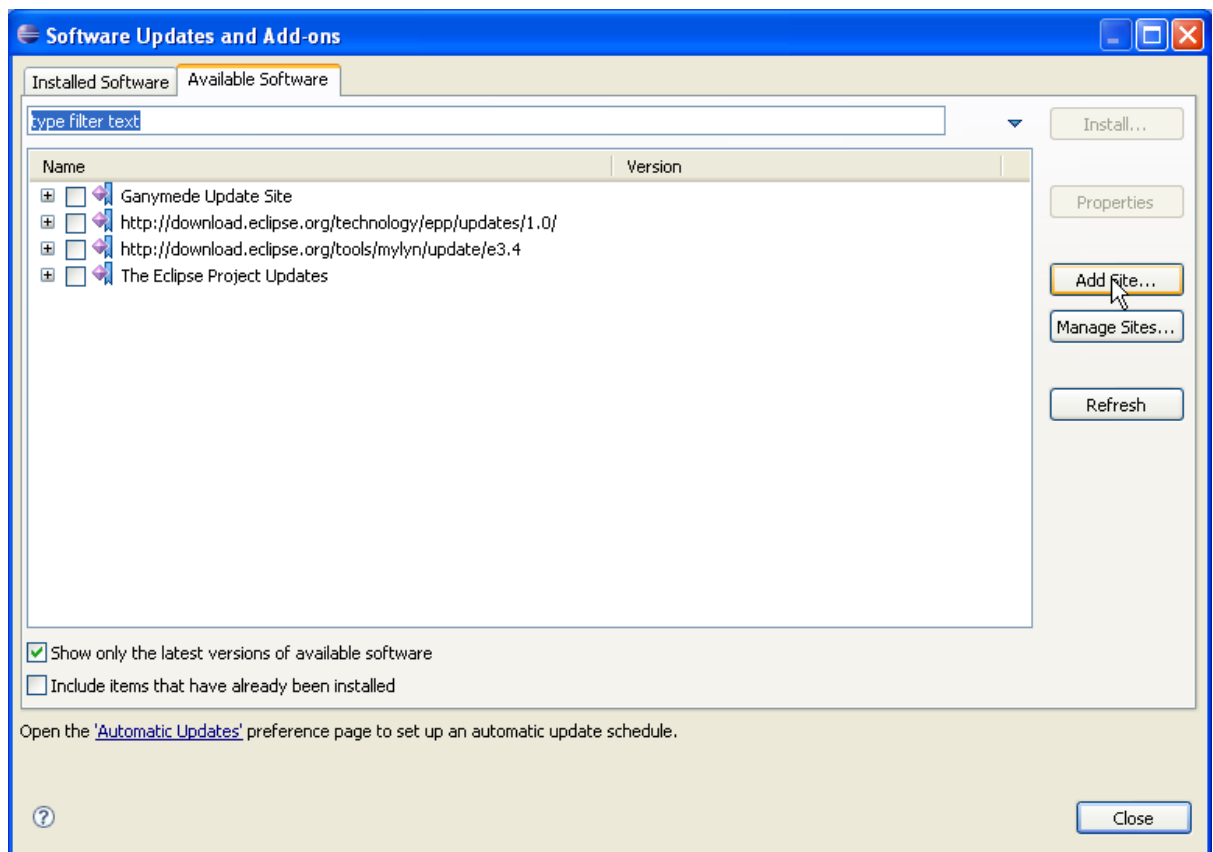


Figure 3

4) In the Add Site dialog, click Archive

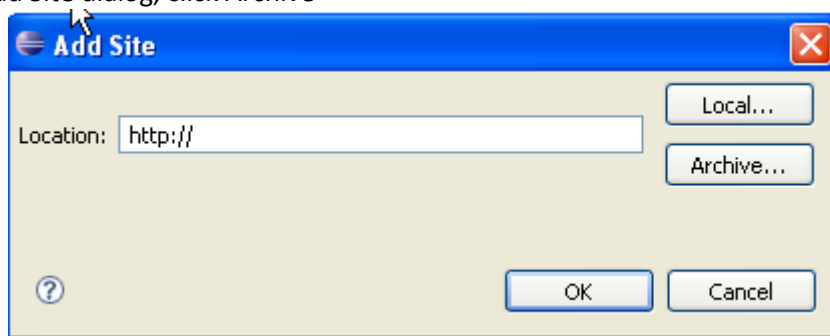


Figure 4

- 5) Browse to the location of the BlackBerry Plug-in zip file on your local machine and click OK
- 6) Click OK. The BlackBerry Update Site appears in the Available Software list

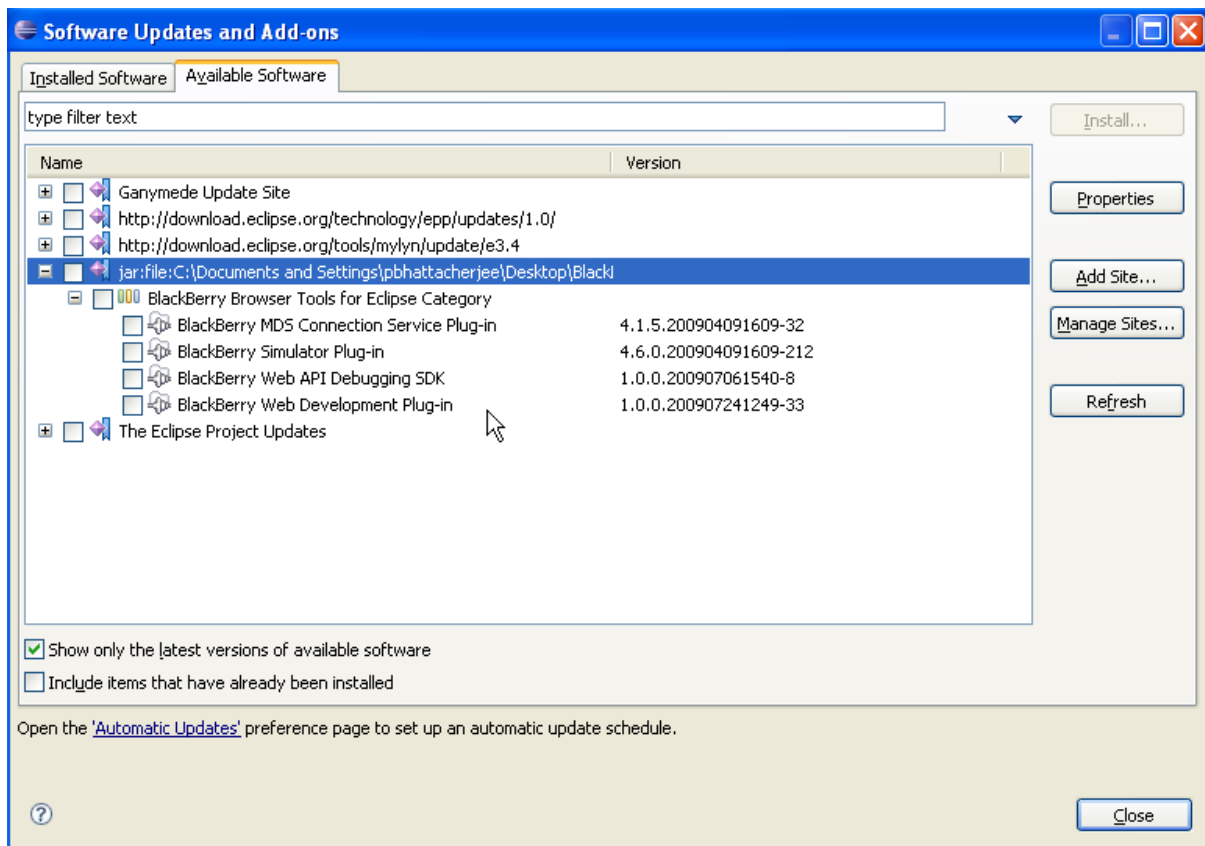


Figure 5

- 7) Select all of the items under BlackBerry Update Site

- 8) If Web Tools Platform (WTP) is not installed:
 - a. Make sure Ganymede Update Site is available, since all dependency plug ins will be downloaded from that site
 - b. In the Ganymede Update Site, under Web and Java EE Development, select Java EE Developer Tools, JavaScript Developer Tools, and Web Developer Tools.

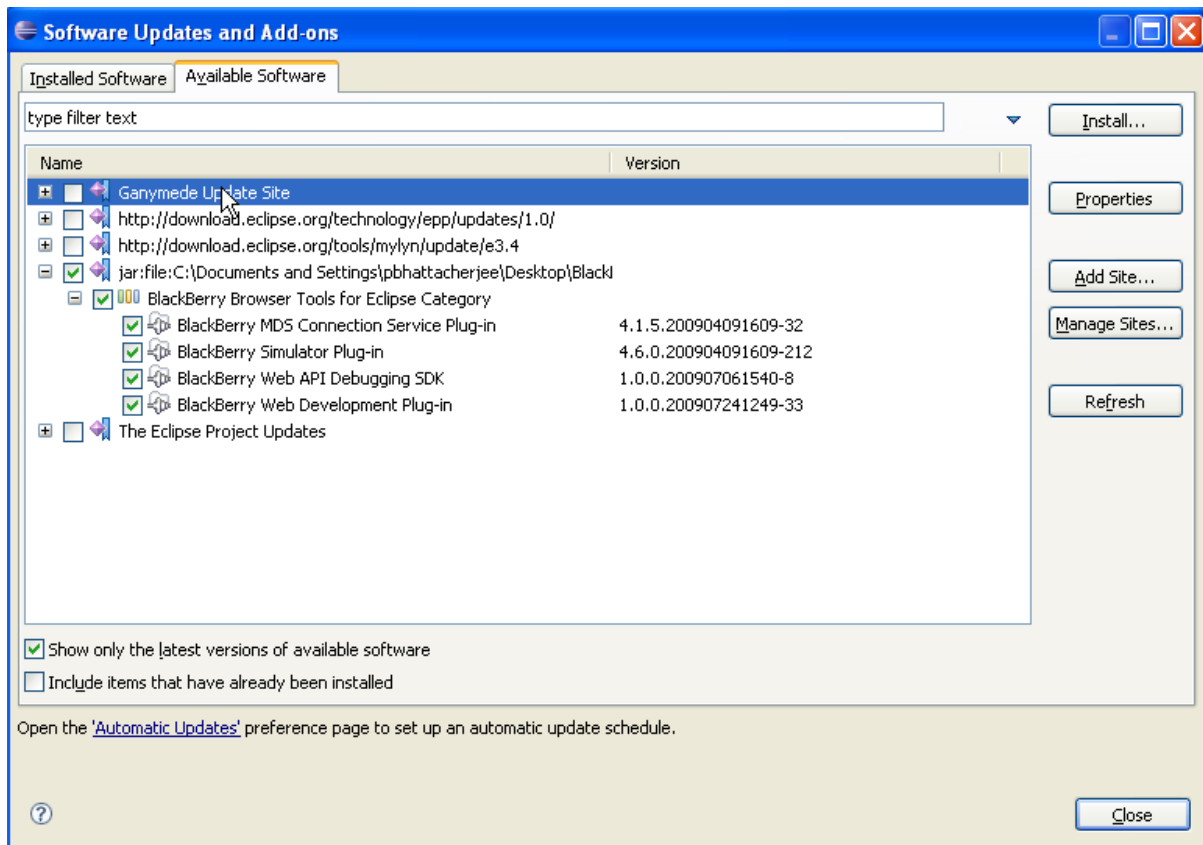


Figure 6

- 9) Click Install.

The BlackBerry® Web Development Plug-in for Eclipse and all required dependency plug-ins are installed.

Links

BlackBerry Developers Web Site:

<http://na.blackberry.com/eng/developers/>

BlackBerry App World:

<http://na.blackberry.com/eng/developers/appworld.jsp>

BlackBerry Enterprise Server:

<http://na.blackberry.com/eng/services/server/>

BlackBerry Web Loader:

<http://www.blackberry.com/developers/downloads/webloader/>

Developer Video Library:

<http://na.blackberry.com/eng/developers/resources/videolibrary.jsp>

Documentation:

<http://na.blackberry.com/eng/support/docs/developers/?userType=21>

Knowledge Base Articles:

<http://www.blackberry.com/knowledgecenterpublic/livelink.exe/fetch/2000/348583/customview.html?func=ll&objId=348583>

Forums:

<http://supportforums.blackberry.com/rim/?category.id=BlackBerryDevelopment>